



مؤسسة تقنية حلول الشبكات العالمية  
**Global Tech. Networking & Solutions**  
**Complete IT & Low Current Solutions**

# COMPANY PROFILE





**Global Tech** Founded in 1995 IT professionals, Offering a wide range of cross-IT-industry products, applications and services to meet the majority IT infrastructure needs of our customers Global Tech. Networking & Solutions is principally involved in providing integrated IT and communication solutions to various industries including Energy, Oil and Gas, Utilities, Telecommunications, Government, Banking and Finance, Industrial and Health Care. Global Tech. Networking & Solutions offers its clients a comprehensive range of advanced technology IT and communication solutions to suit various application and requirements involving the following:

## Telecommunication Backbone Systems and Infrastructure

- ✓ Networking Infrastructure & Security, Video, Voice, Data and Specialized Systems
- ✓ Data Centre,
- ✓ Servers, Storage, Converged/ Dynamic/Virtualized Infrastructure,
- ✓ Audio Visual Solution and Collaborative Working Environment (CWE)
- ✓ Safety & Security Solutions
- ✓ Software Applications.



# PRODUCTS



**We** are offering clients choice and value. We have the solutions, tools and resources to help clients speed time to application deployment, optimize infrastructure capacity, reduce power consumption and free resources to focus on innovation that drives business growth. We partner with leading innovators to ensure you get the best possible I.T. Products.



## SOME OF OUR MAJOR PRODUCTS...

✓ DESKTOP / MONITOR / PC	✓ SERVER / STORAGE
✓ LAPTOP / POS MACHINE	✓ SWITCHES / ROUTERS
✓ PRINTER / SCANNER	✓ NETWORK CABINET / INDUSTRIAL PC
✓ UTP – FIBER OPTICAL CABLE	✓ CCTV SURVEILLANCE
✓ IP - TELEPHONE	✓ FINGER PRINT ACCESS CONTROL
✓ FIRE ALARM	✓ PUBLIC ADDRESS SYSTEM

For more product information contact us at below given details.

**Tel: : 013 8979498, Email : [info@globaltech-sa.com](mailto:info@globaltech-sa.com) / [sales@globaltech-sa.com](mailto:sales@globaltech-sa.com)**



Global Tech. Networking & Solution as a specialist in IT industry are providing IT Networking & solution services on a regular basis to number of clients in Government/Public Sector. Our employees are guided by a well defined work approach and adhere to ethical business practices, work to deliver results of desired quality and ensure customer satisfaction.

We have the capability to provide the necessary IT Services, according to your specifications. We can provide Services on a long term/project wise in the following areas.

## We are expertise in:

- ☐ Advanced IP routing and switching Network Management
- ☐ CCTV camera Video conferencing
- ☐ UTM or firewall security
- ☐ LAN and WAN connectivity (network cabling, wireless connectivity) Wi-Fi solution
- ☐ Computer Application installation and support Fiber optics
- ☐ Customize Software solution Website development / Branding 3d walk through
- ☐ Flash/ PPT Presentation TDL solution
- ☐ Server solution Anti-virus Solutions
- ☐ Data backup/ recovery solutions VPN Solutions.
- ☐ Networking Infrastructure & Security, Video, Voice, Data and Specialized Systems.
- ☐ Audio Visual Solution and Collaborative Working Environment (CWE).
- ☐ Safety & Security Solutions.





## **NETWORKING**

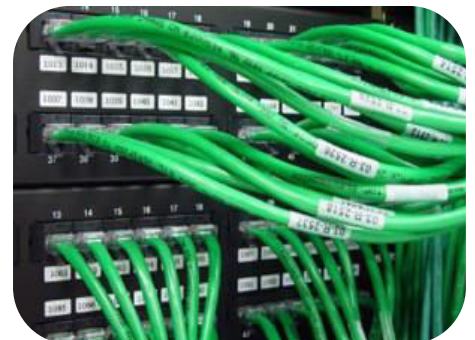
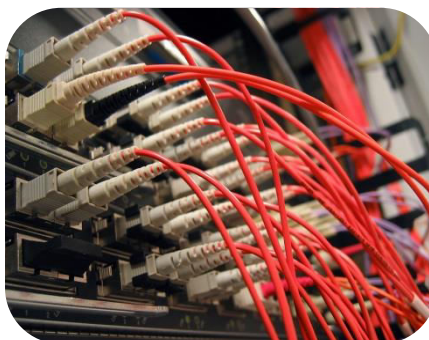
Global Tech Networking & Solutions. specializes in the design, installation, administration and support of Local Area Networks (LANs), Wide Area Networks (WANs) and wireless setup (Wi-Fi) base on Microsoft's Windows2008\2003\2000\XP\NT and Linux Network operating systems.





## UTP STRUCTURE CABLING / FIBRE OPTIC CABLING.

The installation of fibre optic cable is the main backbone link between equipment rooms and telecommunications closets, of all major fibre optic network solutions, campus network solutions, and where there is a need for large network data transfer within data storage centers. It is also the main backbone link for Metropolitan Area Networks (MAN), Local Area Networks (LAN), Wide Area Networks (WAN) or if there is a cable length issue with using copper cable solutions like Cat5 or Cat6 cabling systems (maximum 90m copper cable installation).



## TELECOMMUNICATION.

Telecommunications and Networking Services (TNS) is responsible for the design, infrastructure, maintenance, and support of the network, telephone services, software, and hardware. We have five sub-departments: GLOBAL Telecommunications Services, Data Networking Services, Classroom Technology & Video Services, Help Desk, and Technology Support Services (TSS). Value-oriented, basic VoIP call experience for hospitality environments Ideal for lobbies, guest rooms, elevator bays, and conference centers Supports both desk and wall-mounted deployments Include your brand with co-branding plate and paper insert Earth-friendly; IEEE Class 1 rated for low power consumption



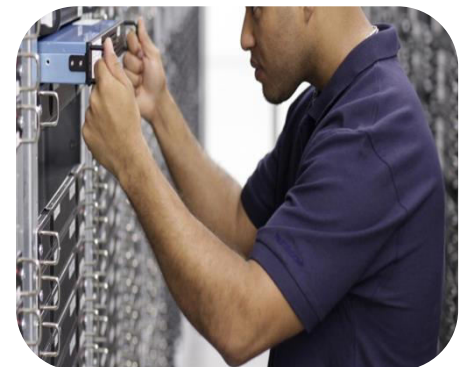
## **IP TV / SMATV.**

IPTV (Internet Protocol Television) enable organizations to distribute broadcast-quality digital TV and video over building or campus IP networks (LANs) to a virtually unlimited number of users, with centralized management, configuration, and control. Based on industry standards, SMATV (Satellite Master Antenna Television System), a community Distribution system for signals received from multiple satellites. We offer a full range of products providing you with everything required for satellite reception right up to complete systems solutions.



## **AMC CONTRACT.**

We Provide Annual Maintenance Contract (AMC) service to customers to help keep their products in proper working condition. AMC signed between the company and the customer to allow regular checkups and routine work to keep the performance and quality of the products in good condition. These services are provided for technical support as well as renewal of the software and various other anti viruses. Technical Services has been formulated recently to become a powerful arm to provide practical Support as well as Solutions for Installation, Commissioning and Maintenance activities as well as customer training needs.







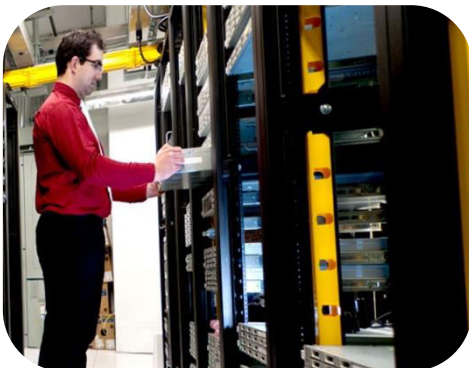
## DATA CENTER SETUP.

Data center technology is critical to overall organization. Not only it houses critical network systems which are vital to the daily operations of modern organizations, it is also one of biggest investments for the organization. To maintain your data center servers and storage devices, Global Tech. Networking & Solutions offers different levels of maintenance and support that best align to the customer business needs.



## NETWORK MANAGEMENT.

Proper Network maintenance is both preventive and corrective. When technical failures occur, the consequences are typically not only expensive, but have enormous time delays in operation productivity for the business. Network maintenance provided by Global Tech. Networking & Solutions streamlines your systems and speed up your business performance. The service provided has the appropriate resources. We provides a fully integrated and automated solution which optimizes fault management and ensures availability, unifies fault and performance management, automates change and configuration management to ensure compliance, and automates IT processes.







## **SAFETY / SECURITY**

Security is the degree of protection against danger, damage, loss, and criminal activity. We help customers to protect people, property and assets, optimize processes to improve business efficiency. we offer the possibility for any authorized person to remotely access live images over the network



## **CCTV SURVEILLANCE SYSTEM.**

Closed Circuit Television (CCTV) is a system where the circuit in which the video is transmitted is closed and all the elements (camera, display monitors, recording devices) are directly connected. This is unlike broadcast television where any receiver that is correctly tuned can pick up and display or store the signal. Thanks to reduced costs in the manufacture of cameras and video recording equipment, camera systems are becoming more and more commonplace in smaller businesses, and even private homes.



## **MATV / CATV – SATELLITE DISTRIBUTION NETWORK.**

SMATV– CENTRALIZED SATELLITE DISH NETWORK IN. Digital Satellite Master Antenna Television (SMATV) is a cost effective type of TV distribution system which would suit communal properties such as hotels, bars, office blocks, hospitals or prisons – anywhere that you would want to control the TV channel line up over multiple TVs. Digital SMATV is designed to capture and decrypt (as necessary) a chosen selection of channels which are then combined onto a coaxial cable distribution system for viewing on a standard Free view Digital TV receiver at the outlets of the system.







## RFID ACCESS CONTROL SYSTEM.

Access electronic or simply put RFID automated access for door controls to buildings, departments, rooms, secured closets (wiring, PBX, etc.) and cabinets is very cost effective and secure to use. Many people do not realize how easy it is to implement card access systems such as card access door or doors using RFID readers and RFID Cards or Keyfobs for Secured Access Control Management. You can even use smart readers for computer rooms and securing individual computers.



## RFID & FINGER PRINT ACCESS CONTROL SYSTEM.

The New Generation of Smart Devices in Biometrics for Access Control enhances building security, internal communications, and employee management , at a significantly lower total cost of ownership than previous biometric systems for physical access control. Whether being used to access a building, secure restricted locations within, or for time and attendance management, biometric authentication technology has come a long way. Just a few years ago, the debate surrounding biometrics was focused on whether biometrics were accurate and could handle large populations, among many other operational issues.





## FIRE ALARM SYSTEM.

Safety and compliance of fire codes is required by law, but not everyone takes the proper precautions to ensure their personal safety. If you're concerned that your fire-safety systems are not up to par, let us send in our certified experts to remedy the problem. A GLOBAL Networking Systems Fire Alarm System will keep your employees safe and protect your company's important assets. Protect your people and property with our market-leading systems. They can be tailored for a wide range of of buildings, applications and markets, and our technology and comprehensive maintenance can make your job easier by improving serviceability and saving time.



## WIRELESS LAN DISTRIBUTION NETWORK.

In a wireless LAN, the switch or hub connects access points together. This creates a wired backbone enabling wireless LAN roaming protocols to work. Most access points accommodate connection to a switch or hub via an RJ-45 connector and twisted pair (Category 5) wiring. The Cat5 cable can be up to 100 meters (roughly 300 feet) long. As a result, you need to plan the installation of hubs or switches to avoid exceeding this distance. If distances exceed the 100 meters, you can interconnect switches via optical fiber and place switches close enough to access points in various parts of the facility.





A photograph of a modern office interior. The ceiling is a dark grid with recessed rectangular lights. Several white square pillars support the ceiling. The floor is light-colored and reflective. In the background, there are white partitions and a window with blinds.

## **INFRASTRUCTURE**

Cabling is the longest life cycle component of the entire network. A standards compliant cabling system can "future-proof" your network and guarantee continued application support. flexible cabling infrastructure to support multiple voice, data, video and multimedia systems.

## **INFRASTRUCTURE SOLUTIONS**

Cabling is the longest life cycle component of the entire network. A standards compliant cabling system can "future-proof" your network and guarantee continued application support. The evolution of networks continues at a rapid pace, enabling network-wide applications to be deployed to take advantage of networked computing resources in new and innovative ways. When properly deployed and managed, it can have a significant impact on efficiency, including peer-to-peer networks, and clustering.

With all the challenges that confront your business, a structured cabling system can help you alleviate the disruption and network downtime associated with office restructuring, accommodate frequent changes, provide a universal platform for an overall information systems strategy, flexible cabling infrastructure to support multiple voice, data, video and multimedia systems.

A Structured Cabling Service consists of an open architecture, standardized media and layout, standard connection interfaces, adherence to national and international standards, and total system design and installation. The offering includes a range of services such as solutions with CAT5e / 6/ 6a & 7, indoor and outdoor Fiber Optic Cable, Site Audit Report.





## **AUDIO / VISUAL**

We are Audio Visual systems integrator and service provider. We provide design, installation and service solutions to facilitate enhanced communications for any organization. We enjoy helping customers become more effective through interesting and dynamic uses of technology. Our solution can be categorized as follows:

- ☐ Projection Solutions 2d and 3d with high resolution outputs
- ☐ Sound Reinforcement and Local audio conferencing including public address solutions
- ☐ Network Audio and Video Conferencing
- ☐ LCD's and plasma screens
- ☐ Digital Media signage
- ☐ Audio and Video switching, converting and distribution
- ☐ A/V Devices and lighting Controllers
- ☐ Smart boards and smart classrooms

Interactive whiteboard, and beyond that to include other interactive products such as inter- active displays, interactive tables, interactive pen displays, student response systems, document cameras, conferencing software, a full line of interactive learning software and more. Collaborative Working Environment (CWE) integrates people, processes, technology and environment to enhance decision making and improve cross-functional collaboration. Technology enables collaborative working environment and plays a vital role in the decision making process. Security Solutions (Access Control and CCTV).



Global Tech. Networking & Solutions specializes in providing high technology, end to end software solutions to serve business and customer requirements. The solution can be off-shelf form leading market vendors or custom developed for specialized applications. Global Tech. Networking & Solutions is Oracle gold partner and a certified reseller and in close partnership with many vendors such as Adobe, VMware, Microsoft, CommValut etc..

We offer different types of business solutions such as: Oracle, Microsoft, custom built and ready business solutions. Some of the applications include:

- ❑ Oracle solutions such as: Business Solutions, Industry Solutions. Technology solutions, Cloud Solutions
- ❑ Microsoft Solutions such as: Cloud Solutions, Business Analytic, Customer Relationship Management, Small Business Solutions.
- ❑ Building Management Solution.
- ❑ Enterprise resource planning (ERP) Solution System and Network Management Solution Human Resource Management Solution







## CLIENTS IN KSA...

Global Tech. Networking & Solutions has vast knowledge and experience in these industries. Our staff provides advance and cost effective solutions to meet customers' requirements and business objectives





## OUR MAJOR SUPPLIERS.

Over the years, Global tech Networking Solutions has created a network of valuable key partners, establishing long-standing relationships with each of them. Each partner represents a prestigious brand in their respective field of industry with a world wide, Out Standing reputation.



lenovo



AVAYA  
The Power of We™

Cambridge company  
SYSTIMAX®  
SOLUTIONS



Yealink  
EASY VoIP

D-Link®  
Building Networks for People



 **BOSCH**  
Invented for life

Panasonic

Canon

TP-LINK®  
The Reliable Choice

SONY

APC™  
by Schneider Electric

AVANTOR™  
PERFORMANCE MATERIALS







*We offer end-to-end total IT solution, that's  
a promise we maintain with pride!*

**[www.globaltech-sa.com](http://www.globaltech-sa.com)**

**ADDRESS**

**Dossary Tower – Dahran Street  
Al-Khobar, Saudi Arabia  
Po.Box 68872 – Al-Khobar 31952 – K.S.A  
Email: [info@globaltech-sa.com](mailto:info@globaltech-sa.com)**

**Tel : 013 8979498  
Fax : 013 8895597**